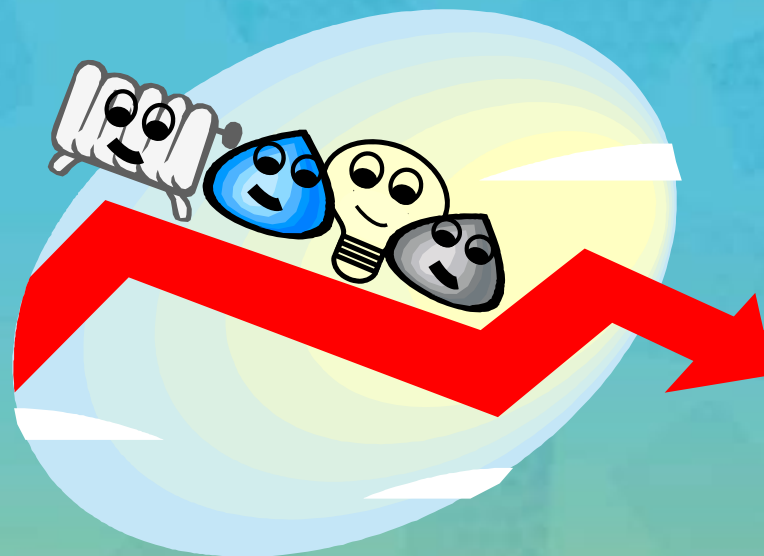


1r Congreso  
Nacional  
Rubí Brilla

# THE 50/50 PROJECT: SAVINGS ACHIEVED



Ajuntament  
de Rubí

RUBÍ  
brilla



be  
Remida



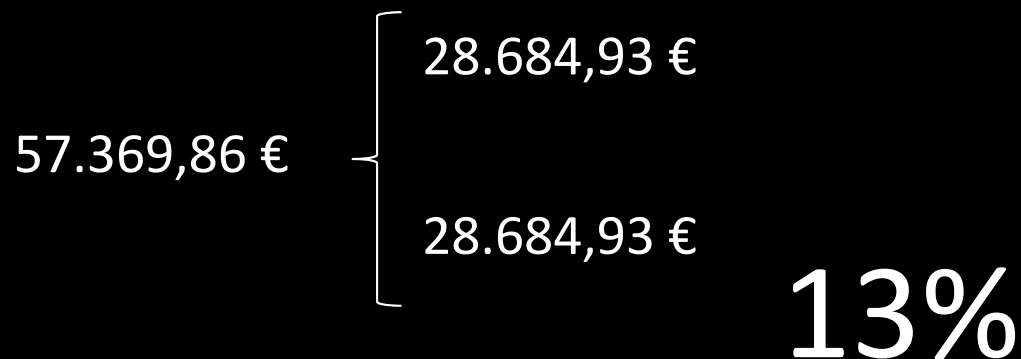
Projet cofinancé par le Fonds Européen  
de Développement Régional (FEDER)

Project cofinanced by the European Regional  
Development Fund (ERDF)

# Balance of energy savings achieved

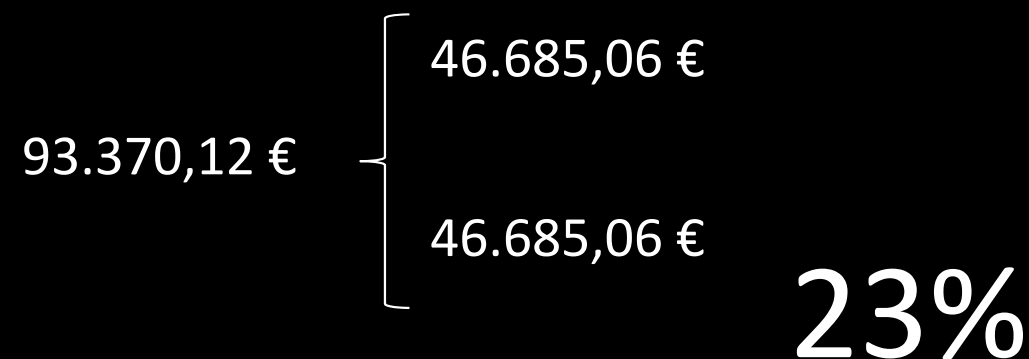
Escuela	Hist. '09-'10-'11		
	TOTAL	AHORRO12-13	%
Pau Casals	41.109,84 €	6.841,48 €	16,64%
25 de Setembre	42.447,66 €	3.524,38 €	8,30%
Joan Maragall	49.464,71 €	22.064,03 €	44,61%
Montessori	37.924,80 €	17.052,35 €	44,96%
Torre de la Llebre	24.326,98 €	- €	0,00%
Schola	22.181,92 €	5.456,24 €	24,60%
Teresa Altet	42.524,74 €	330,68 €	0,78%
Mossèn Cinto	43.002,52 €	- €	0,00%
Ed. Especial	16.639,56 €	1.058,91 €	6,36%
Ca n'Alzamora	41.583,97 €	1.041,79 €	2,51%
Rivo Rubeo	20.098,07 €	- €	0,00%
Ramon Llull	25.107,29 €	- €	0,00%
El Bosc	17.000,00 €	- €	0,00%
<b>TOTAL</b>	<b>423.412,06 €</b>	<b>57.369,86 €</b>	
			<b>13,55%</b>
Subv. directa		28.684,93 €	

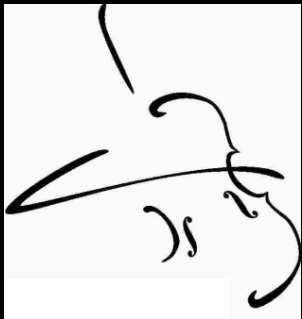
## Course 2012-13



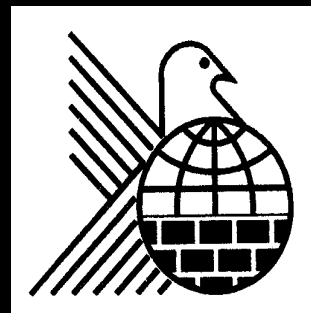
Escuela	Hist. '10-'11-'12		
	TOTAL	AHORRO 13-14	%
Pau Casals	38.829,35 €	17.485,47 €	45,03%
25 de Setembre	41.272,87 €	4.713,41 €	11,42%
Joan Maragall	42.110,03 €	18.612,29 €	44,20%
Montessori	32.240,68 €	13.195,80 €	40,93%
Torre de la Llebre	24.326,98 €	6.901,07 €	28,37%
Schola	20.363,17 €	8.285,51 €	40,69%
Teresa Altet	42.414,51 €	11.433,17 €	26,96%
Mossèn Cinto	43.002,52 €	5.229,46 €	12,16%
Ed. Especial	16.286,59 €	1.903,89 €	11,69%
Ca n'Alzamora	41.236,71 €	3.878,49 €	9,41%
Rivo Rubeo	20.098,07 €	1.731,56 €	8,62%
Ramon Llull	25.107,29 €	- €	0,00%
El Bosc	17.000,00 €	- €	0,00%
<b>TOTAL</b>	<b>404.288,77 €</b>	<b>93.370,12 €</b>	
			<b>23,09%</b>
Subv. directa		46.685,06 €	

## Course 2013-14

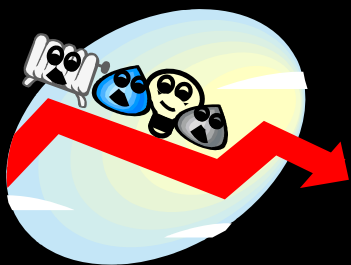




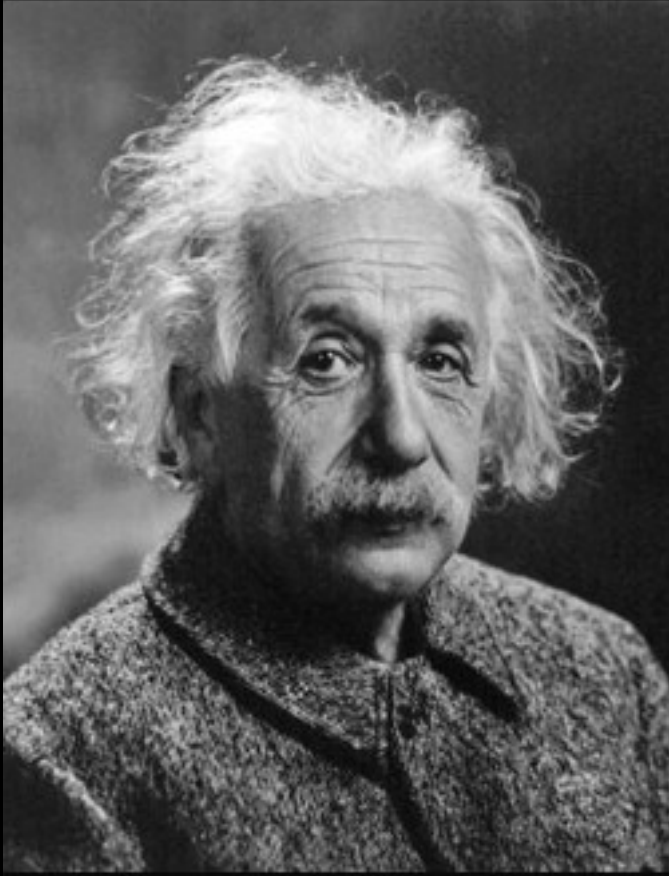
Pau Casals  
School



Schola



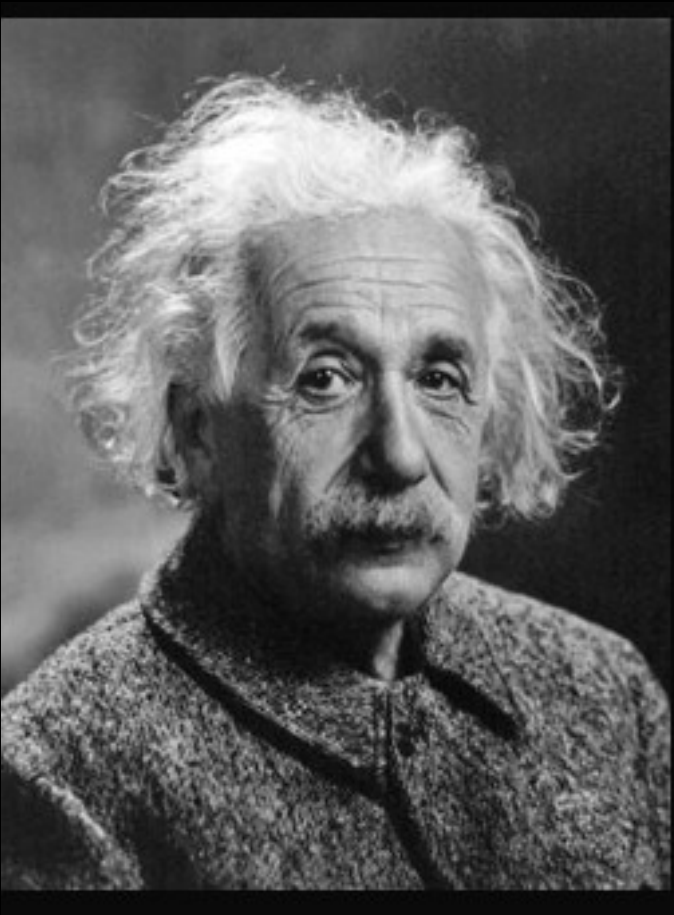
Thanks to everyone for making this possible!!



*If you want different results, don't do  
always the same.*

(Albert Einstein)

A word cloud graphic with various terms related to energy efficiency and sustainability. The words are arranged in a circular pattern around a central logo. The central logo consists of the word "RUBI" in a bold, sans-serif font with a small star above the "i", and the word "brilla" in a smaller, lowercase font below it. The word cloud includes terms such as "Kardzhali", "energético", "eficacia", "hogares", "energía", "agentes", "regulados", "P", "V", "A++", "led", "renovable", "nuevo", "modelo", "sostenible", "UPC", "Brilla", "pareto", "CO2", "pobreza energética", "térmica", "consejos", "Sentrupert", "Gorizia", "cambios", "50/50", "PAES", "cambio climático", "fotolinera", "Rubí", "eficiencia", "futuro", "electrónico", "monitoring", "Rubi al día", "smartPAE", "budget", "REMIDA", "ICCC", and "%00".



*You can not solve problems with the  
same kind of reasoning that  
generated them.*

(Albert Einstein)

A graphic featuring the text 'RUBÍ brilla' at the center, surrounded by various terms related to energy efficiency and sustainability. The terms are arranged in a circular pattern around the central logo. The terms include: 'Kardzhali', 'A+++', 'led', 'energético', 'eficacia', 'hogares', 'energía', 'regulado', 'flujo', 'pareto', 'renovable', 'nuevo modelo', 'sostenible', 'UPC', 'Brilla', 'RUBÍ', 'brilla', 'CO2', 'pobreza energética', 'térmica', 'consejos', 'cambios', '50/50', 'PAES', 'cambio climático', 'Mazda', 'Rubi al Día', 'smartPAE', 'budget', 'REMIDA', 'ICCC', '%00', 'energía', 'fotolinera', 'electrónico', 'monitoring', 'Rubi', 'eficiencia', 'futuro', 'protocolo', 'energía', 'monitoring', 'LVM', 'Rubi al Día', 'smartPAE', 'budget', 'REMIDA', 'ICCC', '%00', 'energía'.

# Organiza:



Ajuntament  
de Rubí



## Colaboran:



Ayuntamiento  
de Málaga

SIEMENS



equo



## Socios europeos REMIDA:

